

Clear View Circulator Bath with KISS-Controller, consisting of transparent baths made of polycarbonate. Powerful pressure and suction pump made of industrial plastic material. With temperature range up to max. 100° C. With adjustable overtemperature protection according to DIN 12876.

NEW: KISS controller:

KISS combines state-of-the-art technology with simple operation and stylish design. Models with KISS controller are suitable for routine tasks in research and industry and are convincing as practice oriented basic equipment:

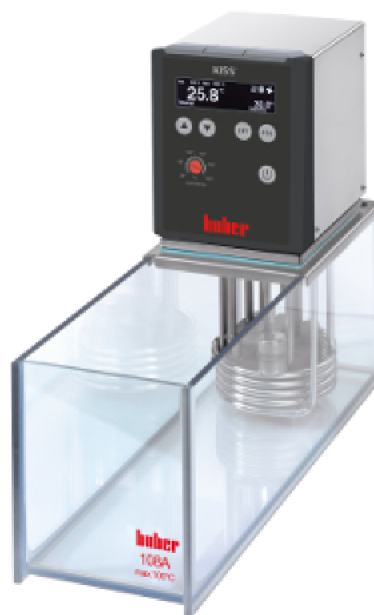
- * Large, bright OLED display
- * Simple operation with menu navigation
- * Simultaneous display of set point, internal temperature, Tmin and Tmax
- * Status displays for pump, cooling and heating
- * USB (Device) and RS232 interfaces
- * Overtemperature protection, Safety class 3 (FL)
- * Autostart function for power failure
- * 3 colour versions available: grey (standard), blue, red

Option: Pt100 sensor connection #10688 to display (not control) e.g. of the process temperature (only available factory fitted, additional charge).

3-2-2 warranty - registration required.

Technical data according to DIN 12876

| | |
|------------------------------------|------------------------|
| Operating temperature range | 25...100 °C |
| with water cooling | 20...100 °C |
| with refrigerator | 15...100 °C |
| Temperature stability at 70°C | 0,05 K |
| temperature set point / display | digital |
| Absolute accuracy | setup for calibration |
| Internal temperature sensor | Pt100 |
| Alarm message | optic, acoustic |
| Safety classification | Class III / FL |
| Heating power at 240V | 2,1 kW |
| Heating power at 230V | 2 kW |
| Heating power at 220V | 1,8 kW |
| Heating power at 208V | 1,6 kW |
| Heating power at 200V | 1,5 kW |
| max. delivery | 14 l/min |
| max. delivery pressure | 0,25 bar |
| max. delivery (suction) | 10,5 l/min |
| max. delivery pressure (suction) | 0,17 bar |
| Pump connection (optional) | M16x1 male |
| Bath volume | 8 l |
| min. filling capacity | 6,6 l |
| Height of bath opening | 160 mm |
| Width bath opening WxD/ bath depth | 130x210/ 150 mm |
| Overall dimensions WxDxH ** | 147x407x330 mm |
| Net weight | 6 kg |
| Power supply requirement | 200-240V 1~/2~ 50/60Hz |
| max. current | 10 A |
| min. Fuse | 10A |
| max. Fuse | 16A |
| Degree of Protection | IP20 |
| min. ambient temperature | 5 °C |
| max. ambient temperature | 40 °C |



Order-No.: 2050.0003.98

from Serial-No.: 402345

1.0/20

Technical details and dimensions are subject to change. No liability is accepted for errors or omissions. Illustrations can deviate from the original.

Included Accessories:

bath bridge #19592

Optional accessories:

Technical data according to DIN 12876

bath cover #37552, cooling coil #30554, pump adaptor #19606, hose connector NW8/NW12, nozzle #33288, temperature control / - connection hoses, thermofluids, further accessories, etc.: see catalog.

Output data valid for: Room temperature 20° C

In accordance with EN60034-1 the following voltage and frequency tolerances are valid:

Voltage + / - 10%, as long as the frequency tolerance does not run in the opposite direction.

Example: -10% voltage and +3% frequency -> not allowed !

-10% voltage and -3% frequency -> allowed.

Information to Electromagnetic compatibility:

Classification (disturbance) to EN55011: Class A, Group 1

Special Case: Acetone and Polyglycol: The plastic pump is not resistant against acetone and polyglycols (depending on the manufacturer).

It is recommended that water is mixed with either glysantine or ethylene glycol for freeze protection. A more resistant plastic is available on request at an additional cost.

Standard delivery conditions - Power cable configuration:

1. Single / two-phase devices (100V to 240V) --> with power cable and country-specific plug (please specify when ordering)
2. Three-phase devices with current consumption less than 63A --> with cable, without plug
3. Three-phase devices with current consumption greater than 63A --> without cable, without plug

** Please respect space requirements. See operating conditions at www.huber-online.com



Wolflabs

Wolf Laboratories Limited

www.wolflabs.co.uk

Tel: 01759 301142

Fax: 01759 301143

sales@wolflabs.co.uk



Use the above details to contact us if this literature doesn't answer all your questions.

Pricing on any accessories shown can be found by keying the part number into the search box on our website.

The specifications listed in this brochure are subject to change by the manufacturer and therefore cannot be guaranteed to be correct. If there are aspects of the specification that must be guaranteed, please provide these to our sales team so that details can be confirmed.

